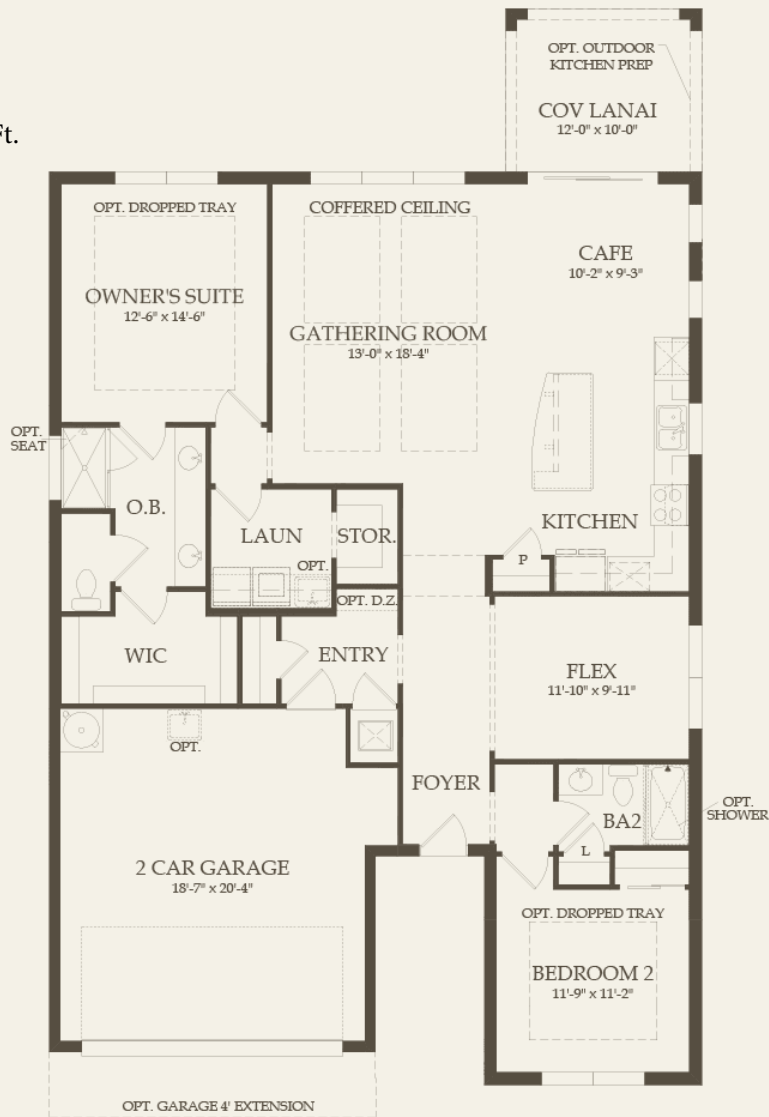




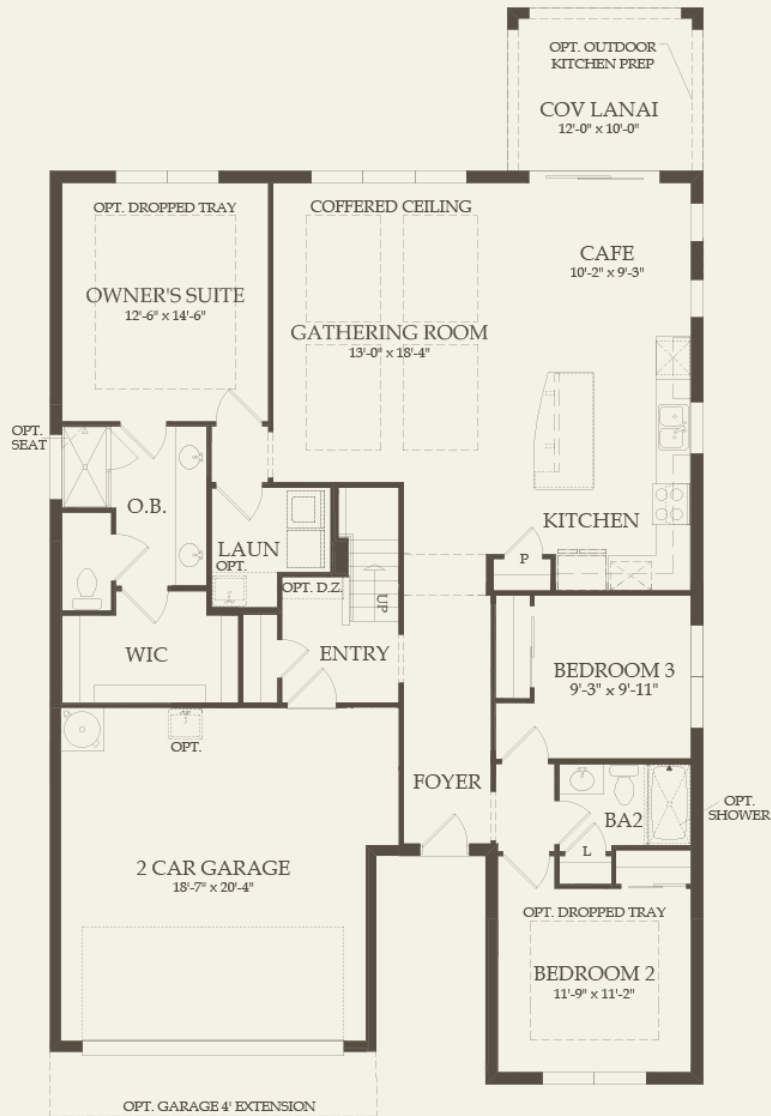
Abbeyville At Corkscrew Shores
20098 Corkscrew Shores Blvd.,
Estero, Florida, 33928

- Starting From \$337,990
- From 2-4 Bedrooms
- 2-3 Bathrooms 1671 Sq. Ft.

2 br / 2 ba - First Floor



To view all option configurations for this home design, see the interactive floor plan.



To view all option configurations for this home design, see the interactive floor plan.

Abbeyville At Corkscrew Shores

20098 Corkscrew Shores Blvd.,

Estero, Florida, 33928

Starting From \$337,990

1671 Sq. Ft.

4 br / 3 ba - First Floor

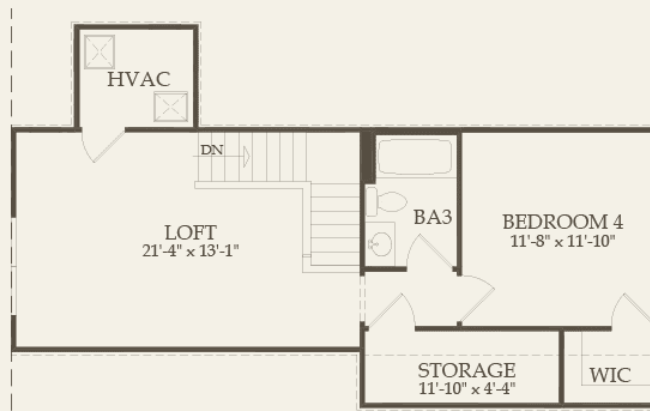


ENGEL & VÖLKERS
CHIODO GROUP

239.248.0551
ryan.chiodo@evusa.com

ENGEL & VÖLKERS
RYAN CHIODO

4 br / 3 ba - Second Floor



To view all option configurations for this home design, see the interactive floor plan.

Use this as FPO Prices may not include lot premiums, upgrades and options. Community Association and golf fees may be required. Prices, promotions, incentives, features, options, amenities, floor plans, elevations, designs, materials, and dimensions are subject to change without notice. Square footage and dimensions are estimated and may vary in actual construction. Community improvements and recreational features and amenities described are based upon current development plans which are subject to change and which are under no obligation to be completed. Actual position of house on lot will be determined by the site plan and plot plan. Floor plans, interiors and elevations are artist's conception or model renderings and are not intended to show specific detailing. Floor plans are the property of PulteGroup, Inc. and its