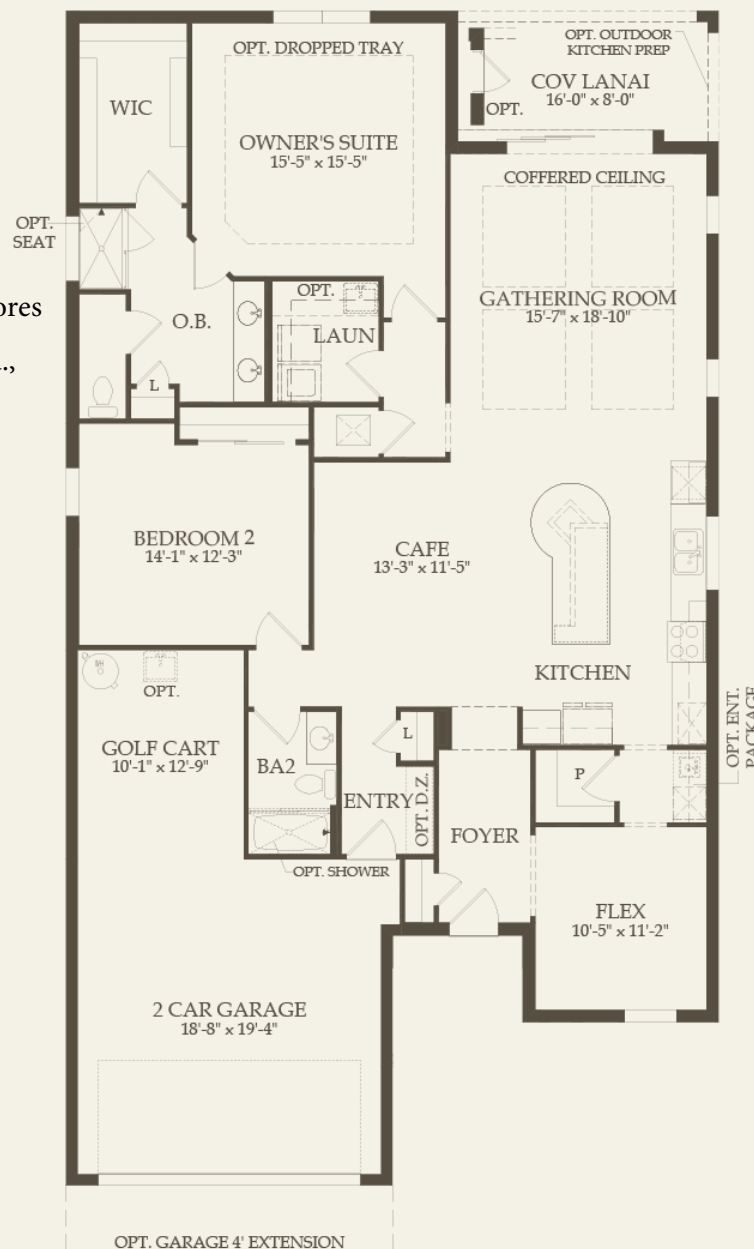


239.248.0551  
ryan.chiodo@evusa.com

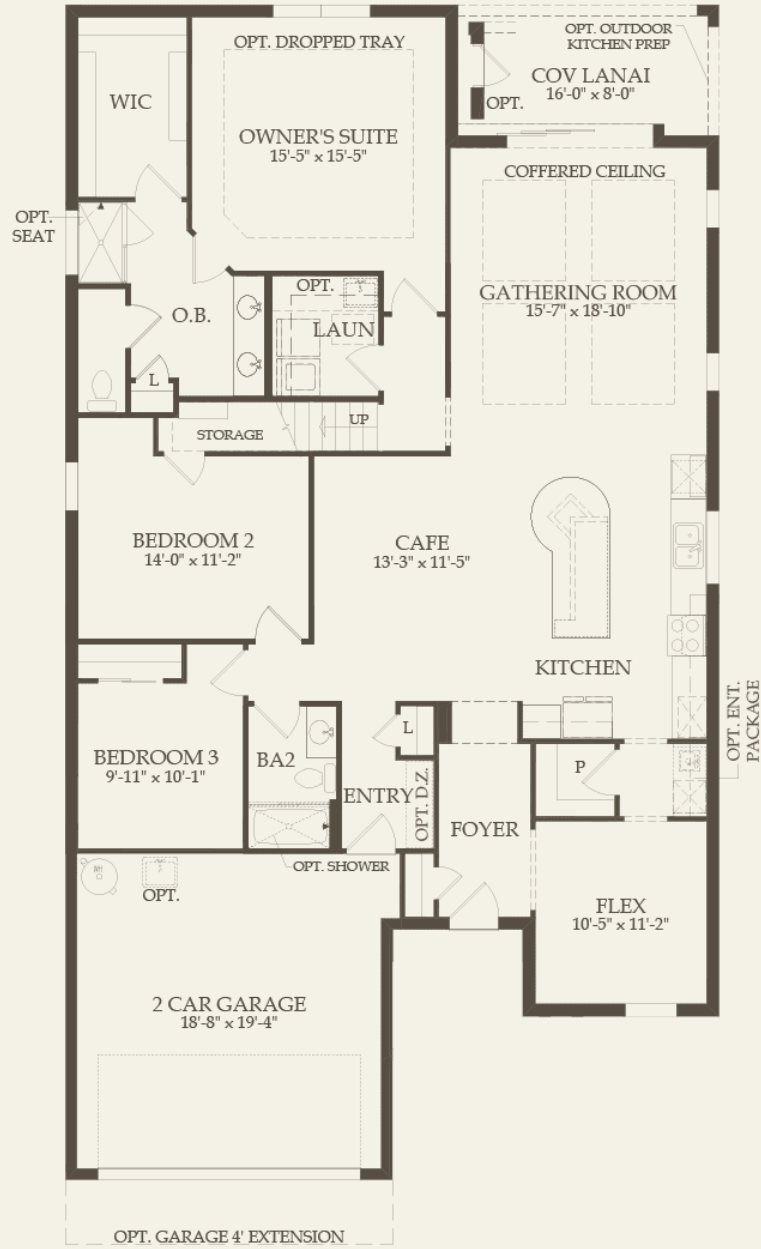
ENGEL & VÖLKERS  
RYAN CHIDO



Martin Ray At Corkscrew Shores  
20098 Corkscrew Shores Blvd.,  
Estero, Florida, 33928  
\$356,990 Starting From  
\$1,929/mo Starting From  
2-4 Bedrooms  
2-3 Bathrooms  
1968 Sq. Ft.



To view all option configurations for this home design, see the interactive floor plan.



To view all option configurations for this home design, see the interactive floor plan.

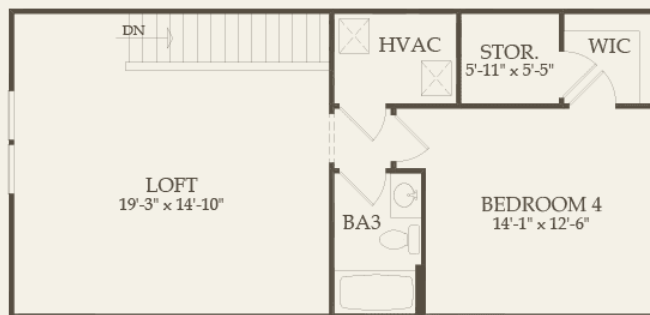
## Martin Ray At Corkscrew Shores

20098 Corkscrew Shores Blvd., Estero, Florida, 33928

- • \$356,990 Starting From
- • \$1,929/mo Starting From
- • 2-4 Bedrooms

2-3 Bathrooms

1968 Sq. Ft.



To view all option configurations for this home design, see the interactive floor plan.

Use this as FPO Prices may not include lot premiums, upgrades and options. Community Association and golf fees may be required. Prices, promotions, incentives, features, options, amenities, floor plans, elevations, designs, materials, and dimensions are subject to change without notice. Square footage and dimensions are estimated and may vary in actual construction. Community improvements and recreational features and amenities described are based upon current development plans which are subject to change and which are under no obligation to be completed. Actual position of house on lot will be determined by the site plan and plot plan. Floor plans, interiors and elevations are artist's