



Quattro


AT NAPLES SQUARE

DOWNTOWN LIVING REDEFINED





Sketches and illustrations are artist's renderings.
Details are subject to changes and field variations. All dimensions are approximate.

A man and a woman are seated at a bar, smiling and looking at each other. The woman is wearing a yellow dress with a white floral pattern and is holding a martini glass with a red drink and a lemon garnish. The man is wearing a dark blue polo shirt. On the bar counter in front of them are two plates of food, including what looks like a salad and some bread. There are also several bottles of alcohol and a glass of water on the bar. The background is slightly blurred, showing other people and the interior of the bar.

A new level of grandeur and style is coming to
Downtown Naples. Because with 7 open-concept
floor plans from 2,300 to 3,800 total square feet,
Quattro at Naples Square is a masterpiece.

Homes here feature Sub-Zero® appliances,
the finest finishes and our most luxurious spaces yet.
With unrivaled amenities and the energy of downtown
just outside your door.

*Naples Square as you've never seen it,
Quattro leaves all limitations behind.*

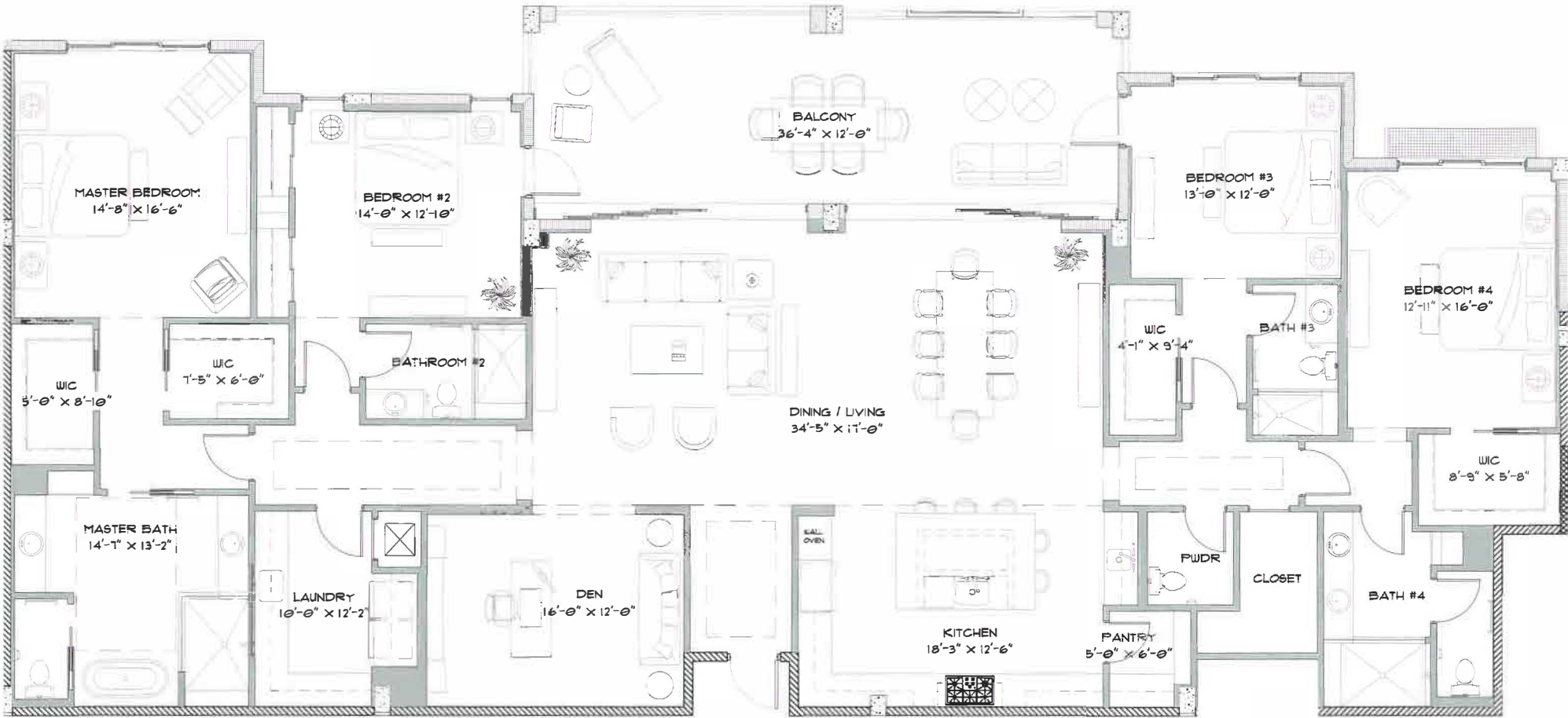
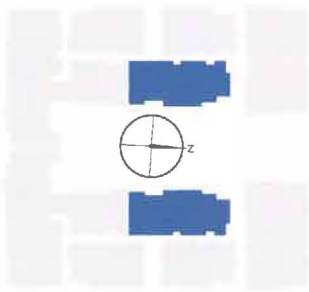
UNIT B

4 Bedrooms | 4.5 Baths | Great Room | Den | 10' Ceilings

Under Air 3,437 sq. ft.

Balcony 448 sq. ft.

Total Living Area 3,885 sq. ft.



Community features, amenities and pricing are approximate and subject to change without notice.

There are various methods for calculating the total square footage of a condominium unit, and depending on the method of calculation, the quoted square footage of a condominium unit may vary by more than a nominal amount. The dimensions stated in this brochure are measured to the exterior boundaries of the exterior walls and the centerline of interior demising walls and, in fact, are larger than the dimensions of the "Unit" as defined in the Declaration of Condominium for WSR Old Naples 4, LLC, which are measured using interior measurements. All dimensions are approximate and all floor plans and development plans are subject to change.

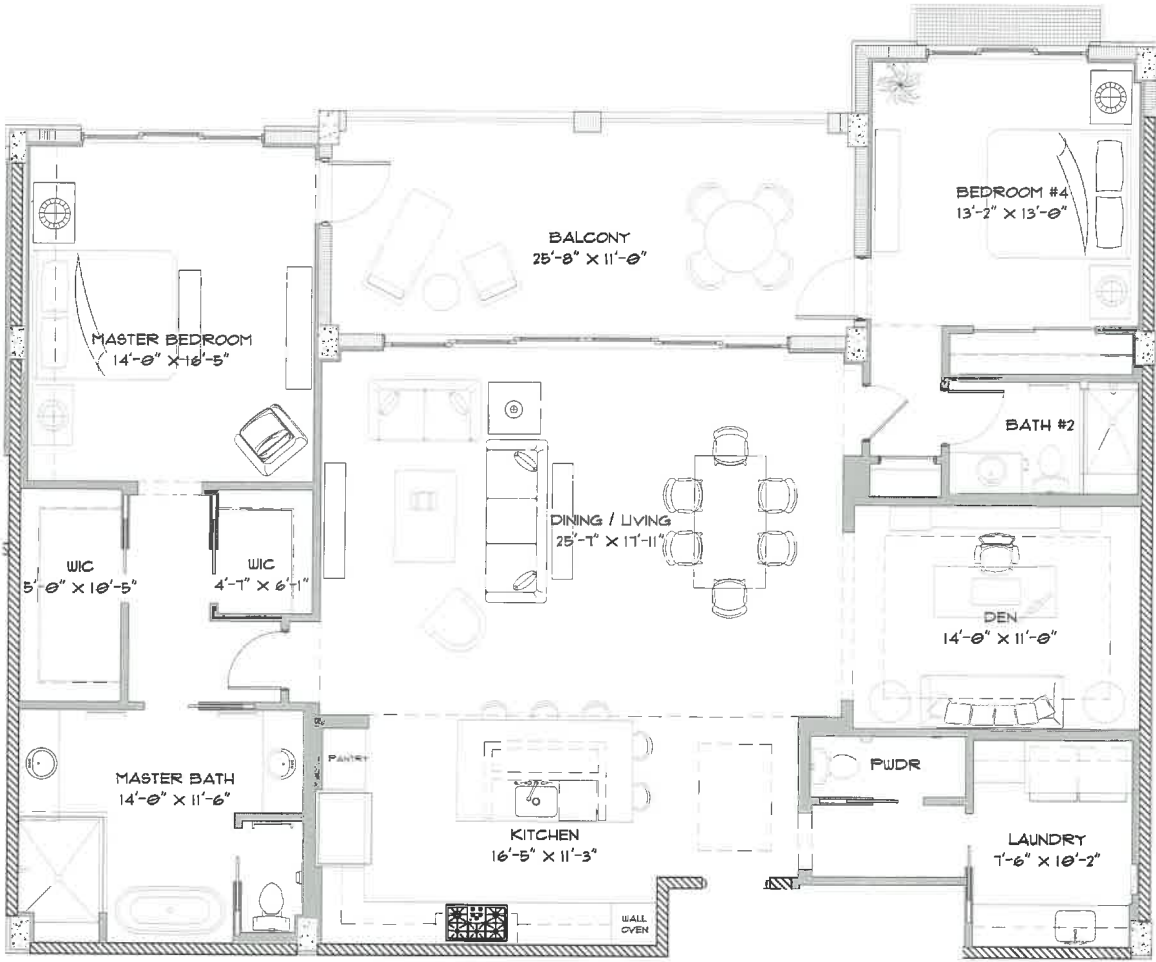
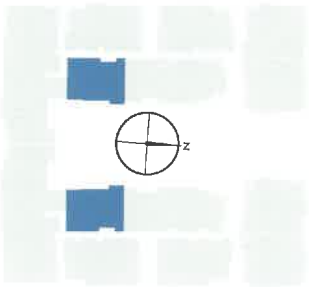
UNIT C

2 Bedrooms | 2.5 Baths | Great Room | Den | 10' Ceilings

Under Air 2,032 sq. ft.

Balcony 282 sq. ft.

Total Living Area 2,314 sq. ft.

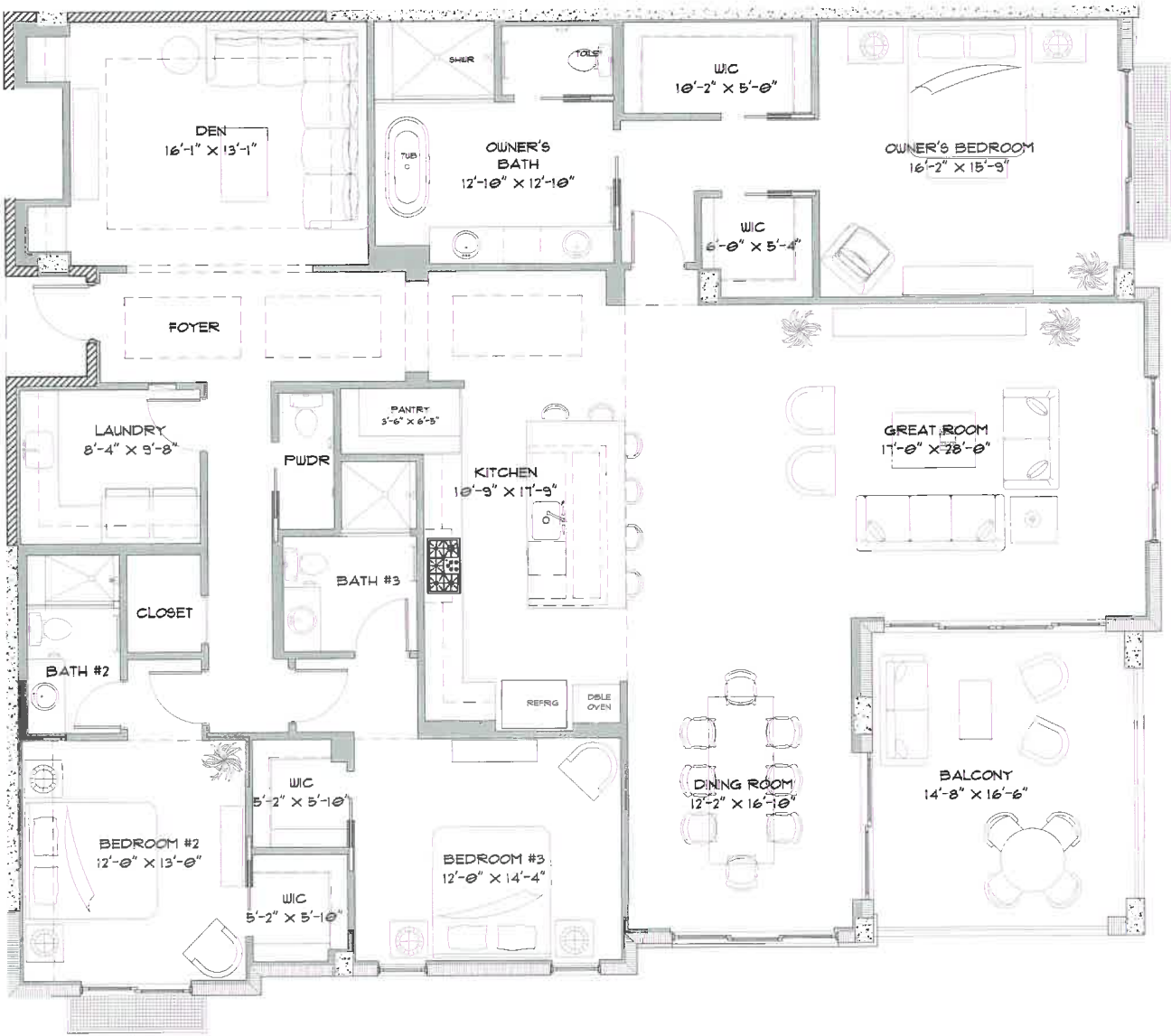
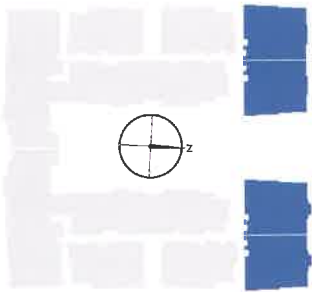


Community features, amenities and pricing are approximate and subject to change without notice.

There are various methods for calculating the total square footage of a condominium unit, and depending on the method of calculation, the quoted square footage of a condominium unit may vary by more than a nominal amount. The dimensions stated in this brochure are measured to the exterior boundaries of the exterior walls and the centerline of interior demising walls and, in fact, are larger than the dimensions of the "Unit" as defined in the Declaration of Condominium for WSR Old Naples 4, LLC, which are measured using interior measurements. All dimensions are approximate and all floor plans and development plans are subject to change.

UNIT D

3 Bedrooms	3.5 Baths	Great Room	Den	10' Ceilings
Under Air	2,898 sq. ft.			
Balcony	242 sq. ft.			
Total Living Area				3,140 sq. ft.

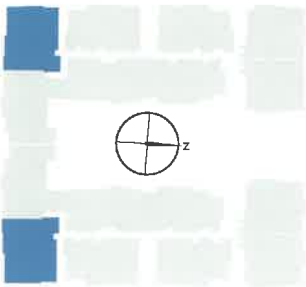


Community features, amenities and pricing are approximate and subject to change without notice.

There are various methods for calculating the total square footage of a condominium unit, and depending on the method of calculation, the quoted square footage of a condominium unit may vary by more than a nominal amount. The dimensions stated in this brochure are measured to the exterior boundaries of the exterior walls and the centerline of interior demising walls and, in fact, are larger than the dimensions of the "Unit" as defined in the Declaration of Condominium for WSR Old Naples 4, LLC, which are measured using interior measurements. All dimensions are approximate and all floor plans and development plans are subject to change.

UNIT D1

3 Bedrooms 3.5 Baths Great Room Den 10' Ceilings	
Under Air	2,952 sq. ft.
Balcony	242 sq. ft.
Total Living Area	3,194 sq. ft.



Community features, amenities and pricing are approximate and subject to change without notice.

There are various methods for calculating the total square footage of a condominium unit, and depending on the method of calculation, the quoted square footage of a condominium unit may vary by more than a nominal amount. The dimensions stated in this brochure are measured to the exterior boundaries of the exterior walls and the centerline of interior demising walls and, in fact, are larger than the dimensions of the "Unit" as defined in the Declaration of Condominium for WSR Old Naples 4, LLC, which are measured using interior measurements. All dimensions are approximate and all floor plans and development plans are subject to change.

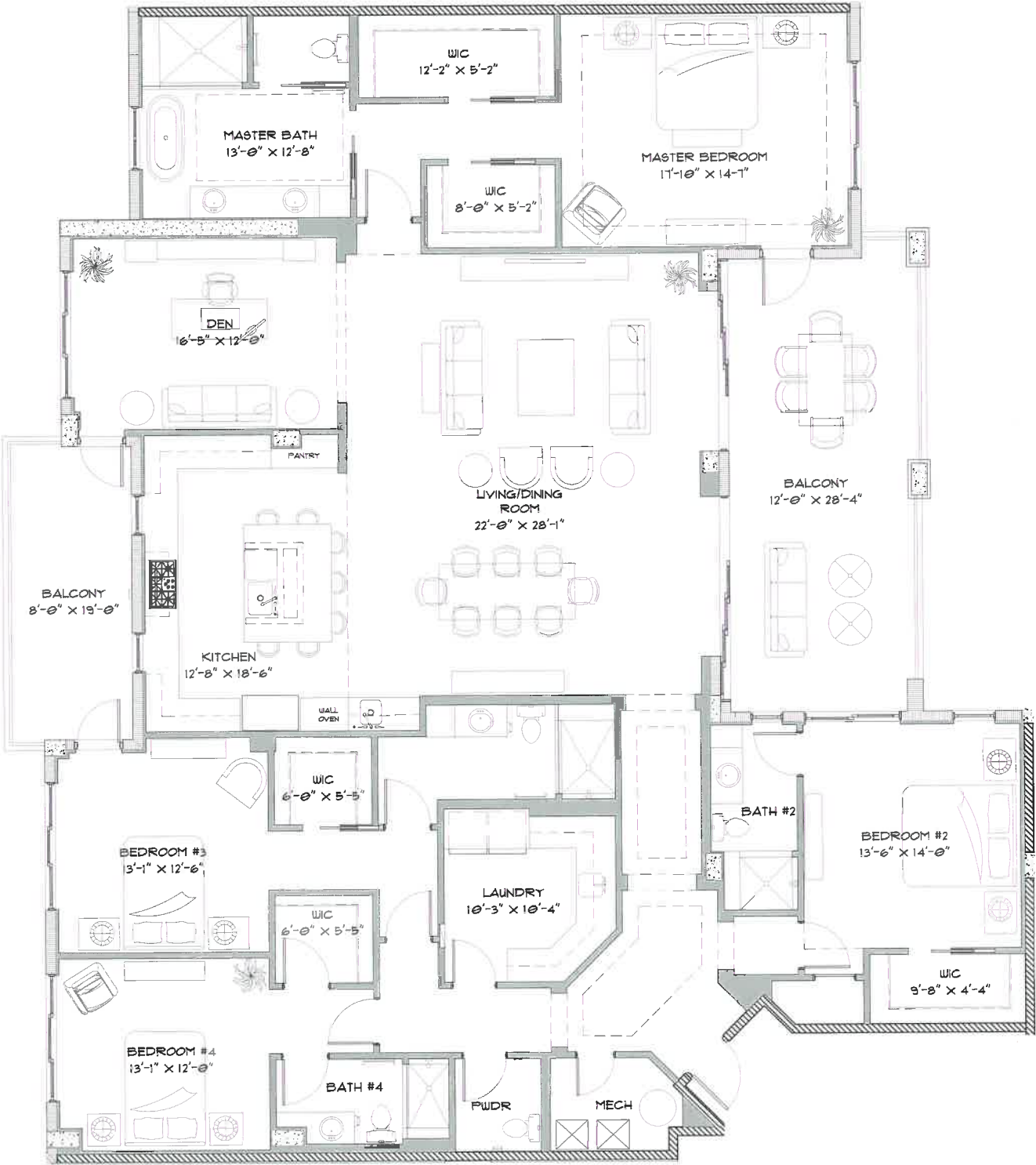
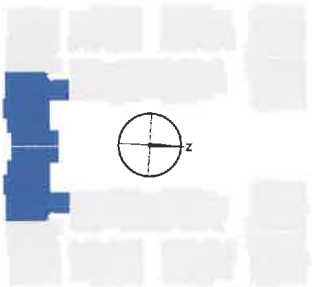
UNIT E

4 Bedrooms | 4.5 Baths | Great Room | Den | 10' Ceilings

Under Air 3,358 sq. ft.

Balconies 369 & 147 sq. ft.

Total Living Area 3,874 sq. ft.



Community features, amenities and pricing are approximate and subject to change without notice.

There are various methods for calculating the total square footage of a condominium unit, and depending on the method of calculation, the quoted square footage of a condominium unit may vary by more than a nominal amount. The dimensions stated in this brochure are measured to the exterior boundaries of the exterior walls and the centerline of interior demising walls and, in fact, are larger than the dimensions of the "Unit" as defined in the Declaration of Condominium for WSR Old Naples 4, LLC, which are measured using interior measurements. All dimensions are approximate and all floor plans and development plans are subject to change.

UNIT F1 (Ground Level)

2 Bedrooms | 2.5 Baths | Great Room | Den | 10' Ceilings

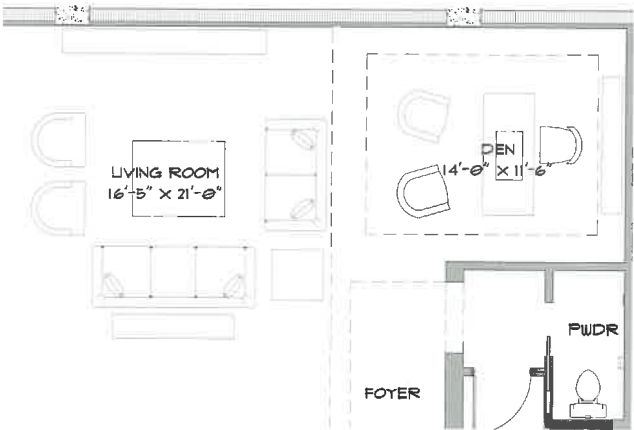
Under Air 2,230 sq. ft.

Balcony 271 sq. ft.

Total Living Area 2,501 sq. ft.



DEN WALL OPTION



Community features, amenities and pricing are approximate and subject to change without notice.

There are various methods for calculating the total square footage of a condominium unit, and depending on the method of calculation, the quoted square footage of a condominium unit may vary by more than a nominal amount. The dimensions stated in this brochure are measured to the exterior boundaries of the exterior walls and the centerline of interior demising walls and, in fact, are larger than the dimensions of the "Unit" as defined in the Declaration of Condominium for WSR Old Naples 4, LLC, which are measured using interior measurements. All dimensions are approximate and all floor plans and development plans are subject to change.

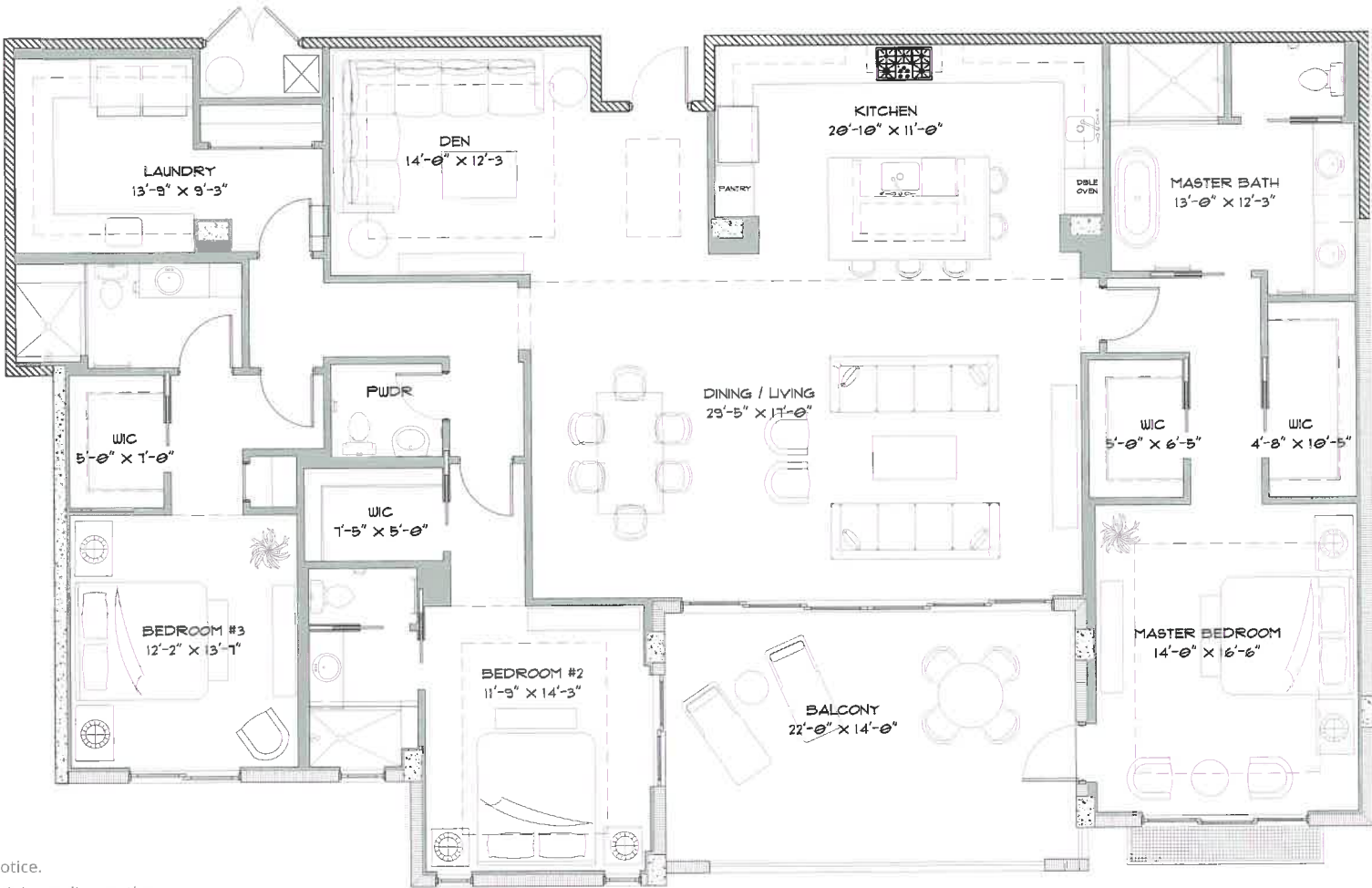
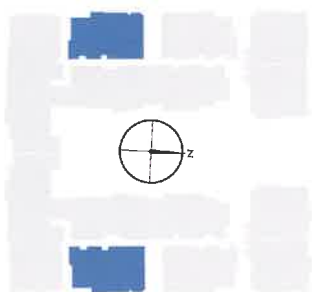
UNIT G1

3 Bedrooms | 3.5 Baths | Great Room | Den | 10' Ceilings

Under Air 2,733 sq. ft.

Balcony 309 sq. ft.

Total Living Area 3,042 sq. ft.



Community features, amenities and pricing are approximate and subject to change without notice.

There are various methods for calculating the total square footage of a condominium unit, and depending on the method of calculation, the quoted square footage of a condominium unit may vary by more than a nominal amount. The dimensions stated in this brochure are measured to the exterior boundaries of the exterior walls and the centerline of interior demising walls and, in fact, are larger than the dimensions of the "Unit" as defined in the Declaration of Condominium for WSR Old Naples 4, LLC, which are measured using interior measurements. All dimensions are approximate and all floor plans and development plans are subject to change.

RESIDENCE FINISHES

FLOORING

- Selection of large-format tile, wood and natural stone flooring options
- Selection of Shaw carpeting for bedrooms and closets

WALLS

- Finish paint included with a selection of color options

KITCHENS

- Sub-Zero/Wolf appliance package including the following:
 - 36" Sub-Zero integrated refrigerator with 18" Sub-Zero integrated freezer (columns)
 - 36" Wolf gas cooktop
 - 36" Wolf "slimline" kitchen ventilation hood
 - 30" Wolf electric wall oven
 - 24" Wolf electric microwave
 - Miele full-size dishwasher
 - Sub-Zero under-counter refrigerator or wine cooler
- Selection of quartz countertop options
- Selection of Dornbracht faucets
- Franke Cube single bowl sink
- Insinkerator pro series garbage disposal

CABINETS

- Selection of Irpinia cabinetry finishes including matte laquer, maple wood and laminate door and drawer fronts
- Selection of chrome, brushed chrome and oil-rubbed bronze hardware
- Cutlery divider
- Cooktop drawers
- Stack of drawers
- Double waste pullout

BATHS

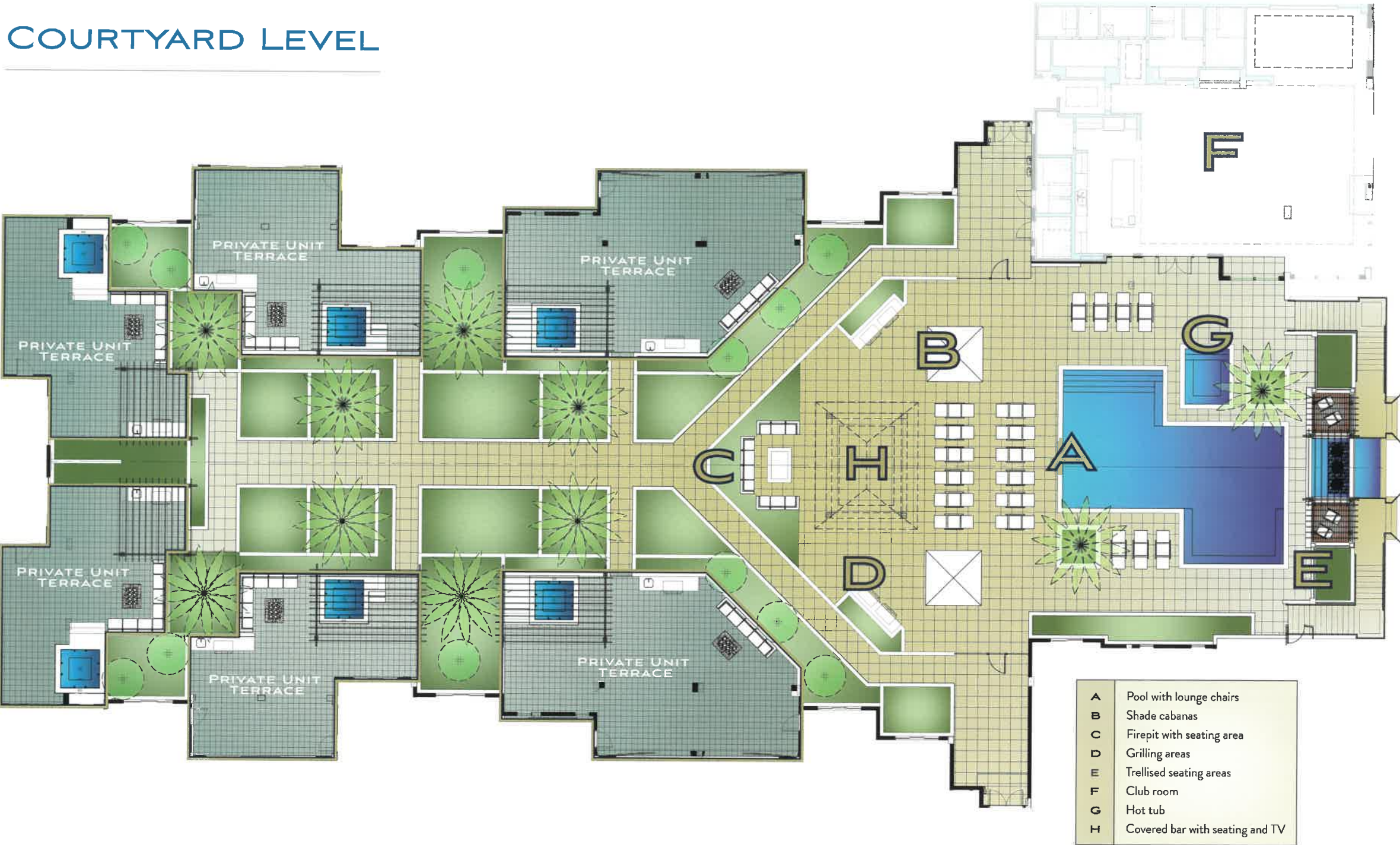
- Selection of marble countertop options
- Selection of Dornbracht shower, faucet and tub spout fixtures
- Kohler Ladena undercounter sink
- Jacuzzi Stella unique size soaking tub in master bath
- Kohler Villager alcove tub in guest bath
- Toto Carlyle II toilet in master bath
- Toto UltraMax II toilet in guest bath
- Dornbracht Deque concealed thermostat

LAUNDRY

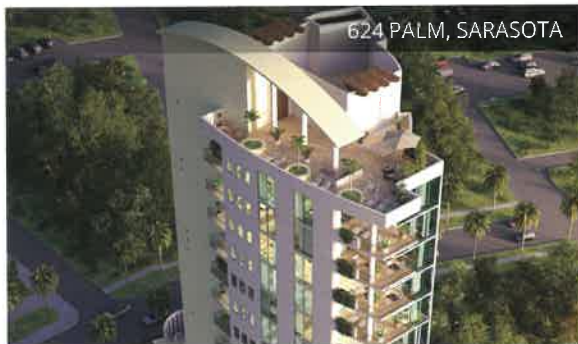
- Electrolux perfect steam washer
- Electrolux perfect steam dryer
- Kohler Simplice pullout spray faucet
- Sterling Latitude laundry sink
- Infinity tile drain and tile insert drain in select locations



COURTYARD LEVEL



Sketches and Illustrations are artist's renderings. Details are subject to changes and field variations. All dimensions are approximate.



624 PALM, SARASOTA



SEAGLASS, BONITA SPRINGS



PALMIRA GOLF & COUNTRY CLUB, NAPLES



HIDEAWAY BEACH, MARCO ISLAND



TWIN EAGLES, NAPLES



ELEVEN ELEVEN CENTRAL, NAPLES



CREATING NAPLES SQUARE

A legacy of excellence

For over half a century, The Ronto Group has been building a solid reputation for its imaginative vision, steadfast integrity and reliable performance. Headquartered in Naples, Ronto's land and condominium development expertise has been internationally recognized for communities that are lasting examples of thoughtful planning, unrivaled craftsmanship and the luxury lifestyle.

Ronto.com







Quattro

AT NAPLES SQUARE

Model Center Open Daily | 1030 3rd Ave South #101

NaplesSquare.com | 239.228.5800



ORAL REPRESENTATIONS CANNOT BE RELIED UPON AS CORRECTLY STATING REPRESENTATIONS OF THE DEVELOPER. FOR CORRECT REPRESENTATIONS MAKE REFERENCE TO THE INFORMATION CONTAINED HEREIN AND THE DOCUMENTS REQUIRED BY SECTION 718.503, FLORIDA STATUTES, TO BE FURNISHED BY A DEVELOPER TO A BUYER OR LESSEE.

All dimensions are approximate and all floor plans and development plans are subject to change. Sketches and illustrations are artist's renderings. Details are subject to changes and field variations.

There are various methods for calculating the total square footage of a condominium unit, and depending on the method of calculation, the quoted square footage of a condominium unit may vary by more than a nominal amount. The dimensions stated in this brochure are measured to the exterior boundaries of the exterior walls and the centerline of interior demising walls and, in fact, are larger than the dimensions of the "Unit" as defined in the Declaration of Condominium for Naples Square II, which are measured using interior measurements. Equal Housing Opportunity.

